

The sleep that
makes your day.

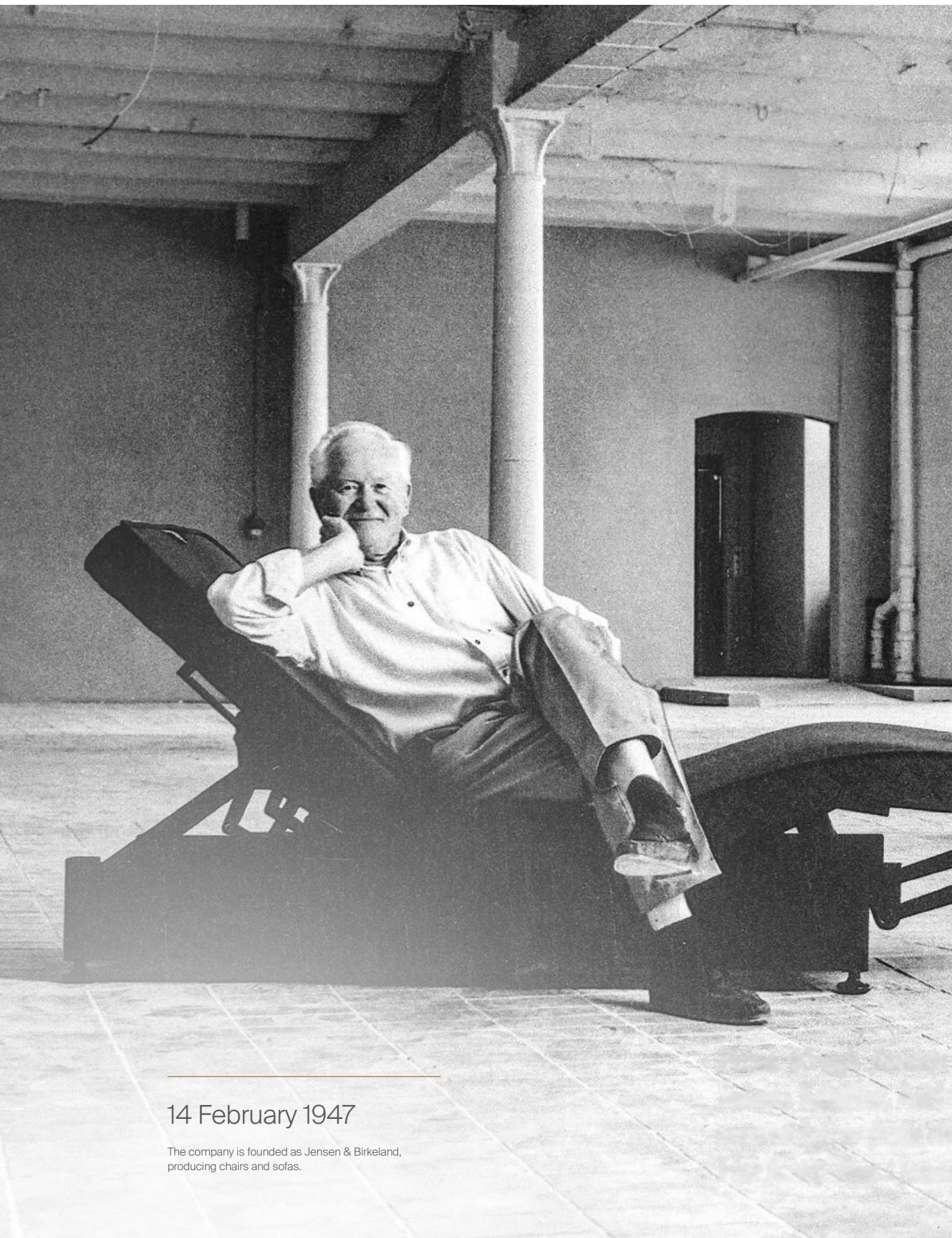


SUPERIOR COLLECTION





We design and build beds that make
the most of your sleep, so you can
make the most of your day.



14 February 1947

The company is founded as Jensen & Birkeland,
producing chairs and sofas.

Sleep pioneers since 1947.

Along the coast of southeastern Norway, just outside Oslo and right by the powerful Drammen Fjord is where you'll find Svelvik. Instantly noticeable about this idyllic town are the winding streets and the white houses. But what happens when you scratch the beautiful surface? You'll find hard work, craftsmanship passed through generations and the sleep of your dreams.

It was here in Svelvik, only two years after the Second World War ended, that the Jensen family started their furniture production. Materials were limited in 1947, ambition was not. From the production of the first mattresses, the aim was to give everyone who chose Jensen the best possible sleep. This hasn't changed.

We believe you should never be held back because you are tired – that's why we have worked tirelessly to learn everything we can about sleep, physiology and materials. Thanks to the knowledge acquired through generations, we have earned the trust of customers far from our home in Norway.

Still, we never forget where we come from. Our factory remains here in Svelvik and we are proud to say that every bed and mattress carrying our name is made with passion and craftsmanship. Because to us, sleep is not something that's just for the night. It's what makes your day.



1984

The newly constructed factory at Sand, just outside Svelvik, begins production.

1952

The first spring mattress, Svella, is launched.

1955

The sofa-bed Siesta is launched.

1985

Jensen starts exporting beds to Denmark.

1990

To further enhance the sleep comfort of Jensen beds, a close collaboration with a physiotherapist begins.

1992

The first adjustable bed on the market – Jensen Vital – is launched.

1998

A revolution in sleep comfort – the Jensen® Original Zone System – is launched.

2004

The world's most advanced bed, the Jensen Supreme Dynamique, is launched. Jensen is bought by Hilding Anders International AB.



2009

The innovative TempSmart mattress topper and pillow are released. The technology automatically stores or releases body heat as needed, creating a perfect environment for sleep comfort.

2010

The Alloy® Spring System is introduced, further enhancing the sleep comfort of Jensen's beds.



2014

Jensen Exact Comfort Adjustment is launched, giving the option to easily adjust mattress tension according to the body's needs.

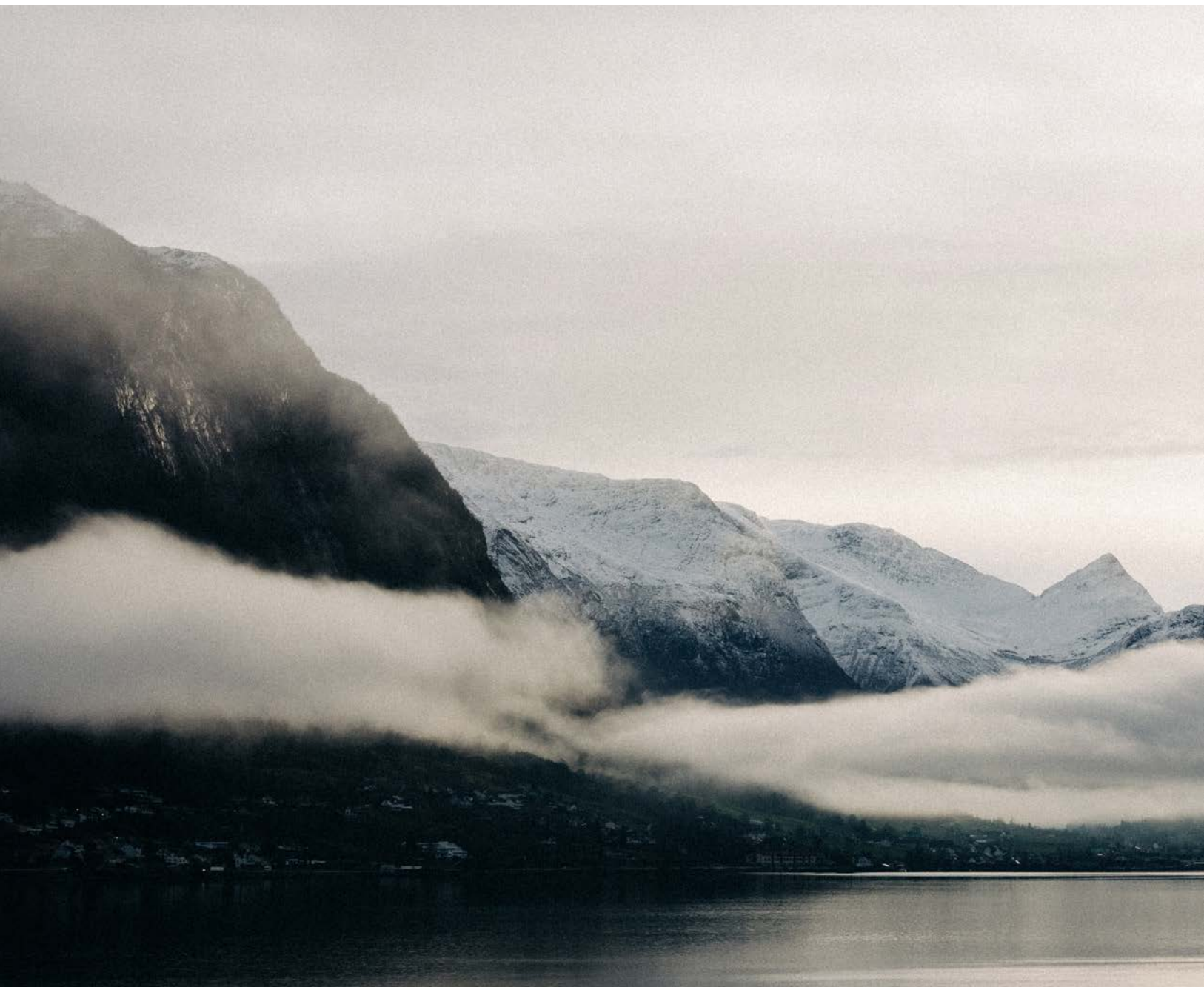
2020

Our most advanced spring system, Alloy® 3.0 is launched. The innovation represents our ambition to help our customers wake up fully rested – every day.



2022

Celebrating our 75th anniversary, Jensen is now one of the strongest bed brands in Norway, Denmark, Sweden, Finland, Iceland, Austria, Belgium, Croatia, Hungary, Italy, The Netherlands, Poland, Slovakia, Germany, Spain, Switzerland, United Kingdom and South Korea.



We share the dream of a
sustainable society.



The wood we use in our bed frames is certified by the Forest Stewardship Council (FSC®). This ensures that the wood is sourced and processed in a sustainable, responsible and socially beneficial manner.

Friendly to nature. And you.

Our beds are made in Norway using only materials, production methods and suppliers that live up to our highly set standards. To prove our sincerity we work with leading sustainability labels, for example the Forest Stewardship Council (FSC®) and Møbelfakta. It makes us sleep better, and hopefully you too.




Grønt Punkt Norge

Grønt Punkt Norge is a non-profit organisation aiming for circular use of plastic. We are committed to limiting plastic waste and in 2020 alone we reduced plastic use in our production by 16 tonnes.



We constantly strive to minimize waste generated by our production. We have return agreements with Norsk Gjenvinning for recycling. By investing in equipment and software we have already reduced waste and production loss by 18%.

- 
- Eco-friendly fabrics.
 - Certified and sustainable wood.
 - No harmful chemicals.
 - Independent quality tests.
 - 5 year full guarantee.
 - 25 year guarantee against frame- or spring breakage.

No harmful chemicals.

As the owner of a Jensen bed, you have the right to expect a quality sleeping experience that is equally safe for your health and for the environment. Hazardous chemicals have no place in a Jensen bed or any of our accessories, which is why we don't treat any surfaces made of wood, metal or fabric with unhealthy flame retardants or other harmful chemicals.

The planet is not renewable, so we have to be.

The planet demands us to be smarter when it comes to the use of resources. Beds are no exception. Working with circular design, we extend the life cycle of our beds and accessories, without compromising their quality. Our aim is always to make beds that stand the test of time, while constantly working to reduce their foot print. Our products are manufactured in Norway with a five-year full guarantee and a 25-year guarantee against frame or spring breakage on all beds.


Today, more parts than ever before in our beds can also be replaced when they are worn out, giving the choice to repair rather than to buy a completely new bed. In our production, we also re-use materials to a higher degree than ever. For example, 30 percent of the steel in our springs has been recycled.



Eco-friendly fabrics.

Our most luxurious bed fabrics are made of wool produced in Norway. This elegant and soft material is inherently sustainable and naturally flame retardant. Its elasticity gives it

a flexibility that feels softer to your skin and ages beautifully. The natural, temperature regulating effect of wool will also do wonders for your sleep quality.



The aim of every innovation is
always to improve sleep comfort,
because this is the key to
increasing the quality of your
sleep and waking up fully
rested – every morning.

It's not just a bed. It's a Jensen.

To give you the best sleep quality possible, our development team has expertise in physiology and sleep science. Our innovations focus on improving sleep comfort to limit the need to wake up and change your position. Because the less disruption you experience while you sleep, the better.



The link between sleep comfort and sleep quality.

There are many reasons why we might wake up during sleep. Dreams, snoring or a sudden need to go to the bathroom are all examples of this. But there are also instances where your bed or the conditions in which you sleep are the problem. Your bedroom might be too warm or cold, and the bed itself might not give the comfort you need to continue sleeping.

If your bed is too firm your brain will signal a need to get out of deep sleep in order to move your body and relieve the

discomfort. One example is positional paresthesia, where your arm falls asleep because you're putting pressure on it. In short, if your bed doesn't provide the necessary sleep comfort, you will not get enough time in the various stages of sleep. The result is that you feel tired in the morning.

At Jensen, the aim of every innovation is always to improve sleep comfort, because this is the key to increasing the quality of your sleep and waking up fully rested – every morning.



We support your body.

We develop beds with passion, craftsmanship – and science. Understanding sleep and how the body recovers is essential to building better beds.

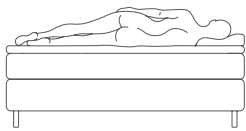
The Jensen® Original Zone System is developed exclusively to help improve your sleep quality. It combines

a soft shoulder zone with firmer support for the curve of the back. This enables the shoulders and hips to sink slightly deeper into the bed, providing optimal pressure relief.

The effect is the same whether you sleep on your side or on your back. This system is an integral part of every Jensen bed and contributes greatly to undisturbed sleep.

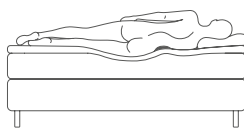


THE CORRECT SLEEPING POSITION:



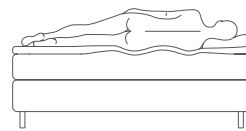
Too firm.

Hips and shoulders do not sink into the mattress and the waist and lower back are not properly supported.



Too soft.

The body sinks too deep into the mattress and the spine is unnaturally curved.



Perfect balance.

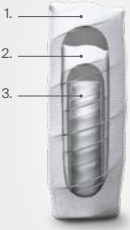
The mattress provides an even, comfortable support. The hips and shoulders sink into the mattress making the spine straight.



Aloy® 3.0 Spring System.

A determining factor in mattress comfort is the spring system. Jensen Aloy® 3.0 is our best and most flexible spring system, continuously adapting to your sleeping position and weight distribution. The extra soft shoulder zone gives plenty of space for your shoulders, while the hip zone pro-


vides both better load-bearing capacity and room for the hip to sink even further down into the mattress. Patented and exclusive to Jensen, Aloy® 3.0 gives your body the support it needs for you to wake up fully rested.



1. Provides softness and comfort, letting the body sink into the mattress.
2. Adjusts to your body and gives stability.
3. Provides an extra level of support.

Scan the code or visit jensen-beds.com to learn more and watch the film about Aloy® 3.0.

Springs two and three work together to relieve the pressure on the muscles resulting in improved blood circulation. Contributing to a deeper and more undisturbed sleep.





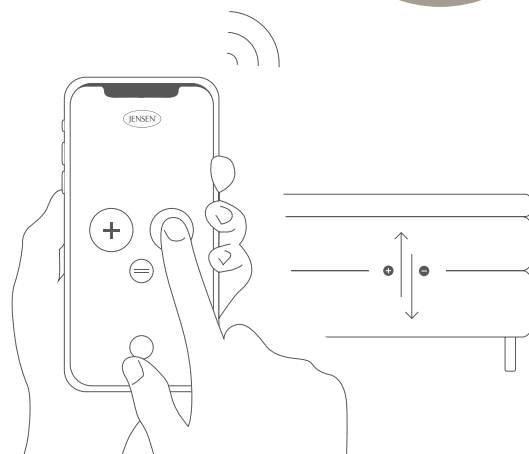
Adjust the
firmness of your
bed using your
smartphone.

Jensen Exact Comfort Adjustment.

Recurring back pain, pregnancy or yesterday's workout are just a few reasons why you may need to temporarily change the firmness of your mattress. Jensen Exact Comfort Adjustment lets you adapt the firmness of your bed with continuous precision. With just the push of a button, you can sleep exactly as your body needs – every night.

Remote control included. App support is also available.

Jensen Exact Comfort Adjustment is available as an add on for our Nordic and continental beds.



+

FIRMER

-

SOFTER

=

FLAT



Our development team has expert knowledge in physiology and sleep science to increase the comfort of our beds – and the quality of your sleep.

The bed is an investment you'll spend every night with for many years to come. This guide will tell you what things to give extra attention as you browse through the many alternatives on the market.



The first thing to remember when looking for a new bed is how important this piece of furniture is for your quality of life. When you are well rested you can perform at the top of your capacity. And of course we are just as impacted by poor sleep quality. In the short term it leads to difficulties with concentration and mood swings. The long term consequences get increasingly serious with reduced resistance to illness and accelerated aging. With this in mind it's safe to say that a bed is an investment in your own health and performance.

Make the most of your sleep.

People today generally value their bed higher than 15 years ago, and are prepared to invest more money when buying a new one. A qualified guess as to why we see this development is the introduction of the smart phone. As most people bring a small, hand-held entertainment system into the

bedroom every night, going to bed no longer means going to sleep. This makes it more important than ever to make the most of the hours that you actually do sleep. And that's where a quality bed makes the difference.

So how do you find the right one? Considering the amount of models and alternatives available it is most certainly out there, no matter what body type and personal preferences you have. Let's go through the procedure of finding the bed of your dreams, step by step.

Reversible, continental or adjustable?

Different types of beds have their unique design and functionality. The most popular model today is by far the continental bed. It consists of three layers, making it higher than reversible mattress beds and providing great sleep comfort. The bottom

layer is a box mattress, the middle a spring mattress on which a mattress topper is placed to complete the setup. Jensen continental beds have up to three individual spring systems, giving significantly better support compared to single mattress beds. A distinctive feature of continental double beds is that there is no crack in the middle, making it more comfortable.

The model known as reversible is the base level bed mattress and is easily used in an existing bed frame. Even though it has just two layers, the Jensen® Original Zone System provides good sleep comfort. One step up in quality, Jensen also provides the exclusive Nordic Line. It has a sturdy bed frame and features a dual-sprung pocket spring system with Jensen Pocket on Pocket technology.

Common questions and our answers.

1

My back hurts, should I get a firm mattress?

No, you should get a mattress that's just right for your body type, weight and sleeping position.

The important thing to bear in mind is that the mattress should support your body so that you can sleep with a straight spine.

2

Is it really necessary to try the bed?

Don't fall into the trap of focusing only on looks. Yes, your bed is a piece of furniture but it is first and foremost supposed to help improve your sleep quality. By trying several beds yourself you increase the chance of finding the perfect match.

3

What's so special about a continental bed?

The continental bed consists of three layers. This makes it higher than a traditional reversible mattress. It also makes for great sleep comfort, since up to three individual spring systems can work together to give you optimal support.

A type of bed that is on the rise in popularity is the adjustable. It provides a level of flexibility and sleep comfort that you just don't get with conventional beds, giving you the possibility of easily fine tuning the mattress' support. An adjustable bed is an especially interesting choice if you suffer from body aches. Even small adjustments in mattress firmness help relieve everything from temporary back pain to improving sleep quality throughout pregnancy. The adjustable bed also opens up for using the bed in new ways, for example watching TV or reading with comfort that is simply on another level.

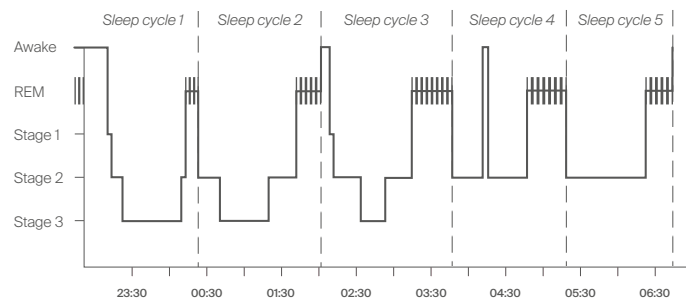
Choose mattress tension.

When it comes to measurements and what type of design you prefer for your new bed, you can do much of your research at home. But to truly find the right bed you need to visit a reseller and try the beds out for yourself. It is the only way to experience the differences between each type

of bed, and most importantly it is a must to order the right firmness. The mattress must comfortably support your entire body so you can relax and sleep well throughout the night. A key to achieving this is the mattress' firmness. It's particularly important that your shoulders and hips sink into the mattress and that your spine is straight. If your body relaxes, you will not wake up stiff and sore in the morning. The right firmness also reduces the risk of unnecessary strain, back problems and restless sleep.

"You'll know you've found the perfect bed when you can sleep through the night peacefully without tossing and turning. Not moving is the key to better sleep quality."

The stages of sleep.



Do you want to learn more about the different stages of sleep and their importance for our recovery? Scan the code or visit jensen-beds.com.





All Jensen resellers are educated to help you find the right mattress tension. They will help you try out the bed in a correct way, lying down in the same position you do when you go to sleep at home. Even though it may seem awkward, try to lie still for at least five minutes in the bed to experience the bed's qualities and make sure you are comfortable. Also try several beds so you can compare them to each other.

However carefully you choose your mattress firmness, there will be instances when your body would benefit from a temporary change. This problem is easily solved with the Jensen Exact Comfort Adjustment add-on. It's available for Jensen's continental and Nordic beds and lets you adjust the firmness of your mattress exactly as your body needs. You can find out more at page 19.

What size do you need?

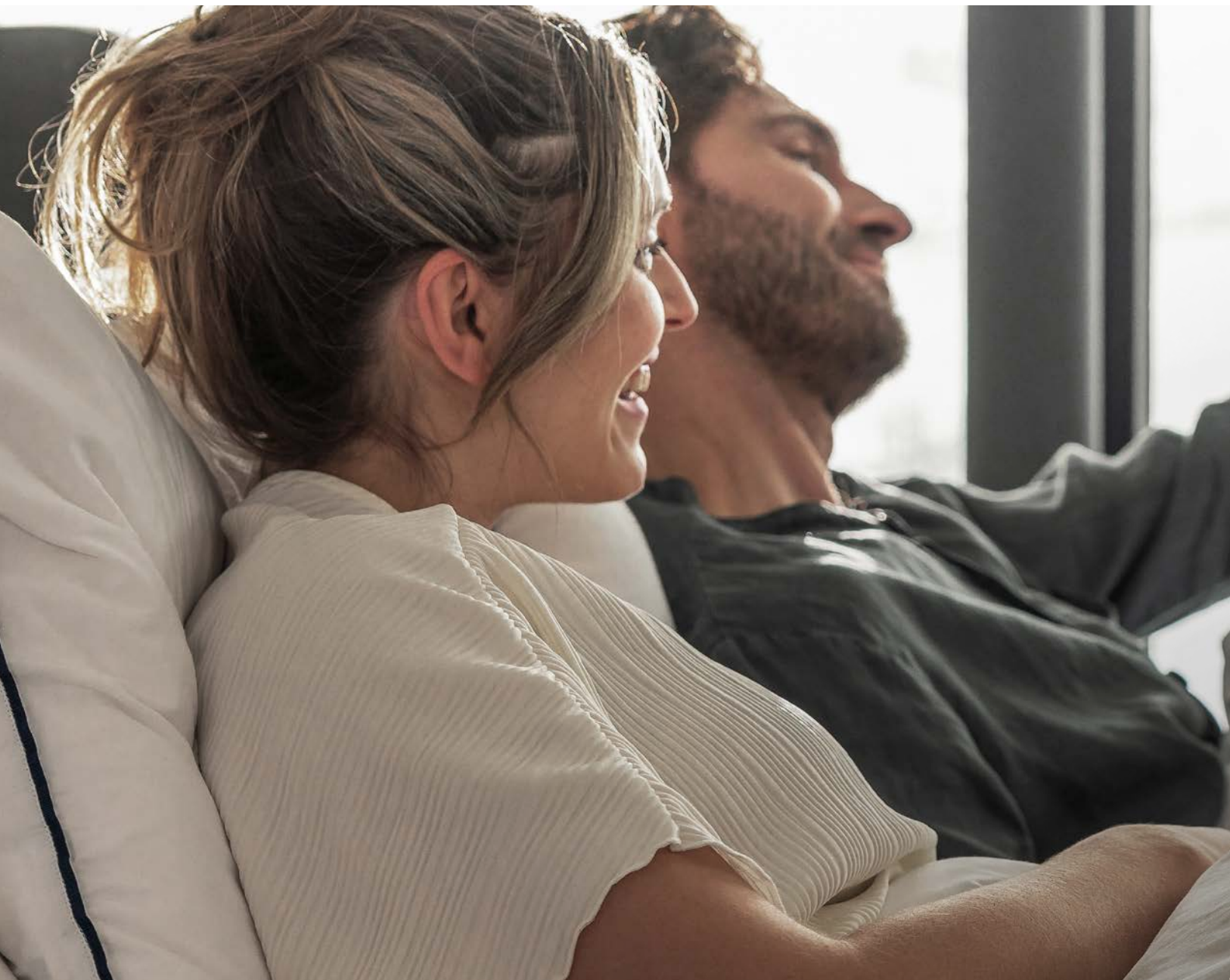
The size of your bedroom can sometimes be a limiting factor, but given that you have space you should aim for a bed measuring at least 90x200 centimeters if you sleep alone and 180x200 centimeters if you share your bed with a partner. If you have pets or children that like to snuggle up beside you, you should also take this into consideration when deciding the size of your bed. So what about length? If you are tall, then you should add extra length to provide the necessary sleep comfort. A rule of thumb is that the length of your bed should at least equal your own height plus 20 centimeters. At Jensen, we give you the possibility of ordering your bed with custom measurements to achieve the best sleep comfort possible.

Don't forget your head.

The pillow is too important to neglect when making an investment in sleep quality. Everyone loves a comfortable pillow, but the most important thing to look out for is how it helps the back of your neck stay in line with your spine. The width of your shoulders is one factor that will affect what size of pillow is right for you. The position in which you sleep is another.

Sleep well!

At this point we hope you have a good idea about what to look out for when deciding which bed is the perfect match for you. Good luck, and don't forget that there's always expert advice waiting at your nearest Jensen reseller.

**Reversible mattresses**

The first level of Jensen sleep quality is the reversible mattress. It is easily used in your existing bed frame and provides great sleep comfort even with just one bottom layer and a top mattress.

**Nordic**

The Nordic design concept features a large assortment of accessories while the bed itself has a single-piece surface. This means that even with a double bed you are rid of the hard middle edge of conventional beds.

The Superior Collection.

We are proud to present the latest result of our long tradition in bed making. From the design to the materials and production methods used, the Superior Collection is a statement of quality and sustainability. All bed types are available as single or double bed sets.



Continental

Our continental beds feature three layers of mattresses, giving a significant boost in sleep comfort and quality. Available as dual tension, our double beds can be ordered with individual firmness for each side of the bed.

Jensen Exact Comfort Adjustment is available as an add-on, fine tuning the mattress' tension to your body's needs. See page 19.



Adjustable

Our adjustable beds provide next level flexibility and sleep comfort. Here you have the possibility of both changing the bed's support and adjusting the bed to your preferred position when reading or watching TV.

Most of our beds can be ordered with adjustable functionality. For more information, see the next page.

Our adjustable beds.

Most of our beds can be ordered with adjustable functionality. If you experience recurring body aches this type of bed is an especially interesting choice, but anyone can benefit from its functionality. As we go through life, we all experience change to our bodies, making it a great advantage to be able to change the way your bed gives support to your current needs. With just the push of a button you can raise or lower the bed from both ends to adjust the bed to your liking.

The adjustable bed also opens up for using the bed in new ways, for example watching TV or reading with comfort that is simply on another level.

FUNCTIONS:



The headrest function adapts the bed so that your neck and head are always in the right position when sitting upright.



Stepless adjustment up/down for both head and foot end, individually or together.



Two beds can be connected and controlled in sync by one remote.



Download our app to easily find and save your favorite position. Supports voice control.



Adjust the bed position using voice control.



A practical light under the bed that can be turned on without disturbing your partner.



Memory function for saving your favorite position.



Jensen Aqtive II

The technology inside this elegant bed is concealed by the fabric-covered frame, giving it the look of a continental divan set when inactive. The Jensen Aqtive II is dual-sprung with spring systems in both the reversible mattress and the base. The extra spring system compared to the Jensen Dream, gives the bed even better stability and comfort.

Jensen Aqtive II is available together with the beds Superior, Bliss and Countess.



Jensen Lean

Jensen Lean represents the latest in bed design and adjustable technology. The low base gives an elegant impression while our new Ease-concept provides unique qualities in durability, easy care and sleep comfort that adapts to your body. All in all, Jensen Lean does wonders for your bedroom, and for your sleep.

Jensen Lean is available with Bliss and Countess.

An adjustable bed can give you the freedom to do things other than sleep, such as read a book or watch TV.



Jensen Superior

The luxurious Jensen Superior is a tribute to our heritage. With the innovative spirit and craftsmanship that has been our trademark since 1947, we have made a bed that is not only known for its sleep comfort but also awarded for its design. With a palette inspired by Norwegian nature, each

colour is available in a combination of fabrics. A plain one for the bed frame and headboard and either a rose pattern or a plain fabric on the reversible mattress. Its woolen textiles have been specially designed for the Jensen Superior and come from the leading Norwegian producer Innvik.



Underneath its beautiful textile surface, the Jensen Superior is equipped with the Aloy® 3.0 spring system, providing precise support adapted to your body for an excellent sleep quality. The flexibility of the Jensen Superior also allows you to include adjustable functionality as an

add-on – either through Jensen Exact Sleep Comfort or the Jensen Active II motorised frame.



The Jensen Superior gives you the benefit of our most advanced technology. The exclusive and patented spring system Jensen Alloy® 3.0, together with an extra layer of pocket springs, the Jensen® Original Zone System and stretch fabrics in all sleeping surfaces. Together they represent the very best in sleep comfort and limit the need to wake and change your sleeping position during the night.

To complete the experience of sleeping in the Jensen Superior, you have the possibility of adding Jensen Exact

Sleep Comfort. This function lets you fine tune mattress tension according to your needs with just the push of a button. You can also choose to go fully adjustable by adding the Jensen Active II motorised frame. This lets you raise or lower your Jensen Superior from both ends to adapt sleep comfort or transforming it into a favorite spot for reading or watching TV.

Available in all standard sizes and can also be ordered to measure.
Features whole sleeping surface on all continental beds and Nordic Seamless.



Our continental beds and Nordic Seamless beds have whole sleeping surfaces, without hard edges in the middle. However, the technology still allows one to choose the degree of firmness individually.

FACTS:

Firmness:

Soft, medium, firm or extra firm sleep comfort.

Model:

Reversible



Nordic



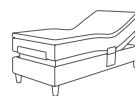
Nordic Seamless



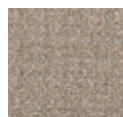
Continental



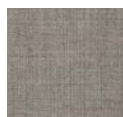
Aqive II



Available colours:



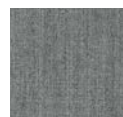
Beige 030
(base)



Beige 031



Grey 015
(base)



Grey 016



Oyster Grey
320



Evening
Anthracite 330



Ivory 211
(base)



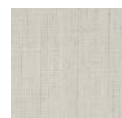
Ivory 221



Olive 213
(base)



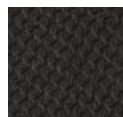
Olive 223



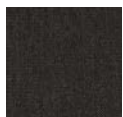
Natural Beige
301



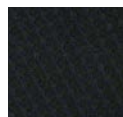
Golden Sand
310



Anthracite 010
(base)



Anthracite 011



Dark blue 020
(base)



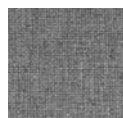
Dark blue 021



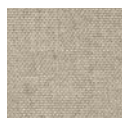
Misty Mint
329



Midnight Blue
328



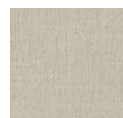
Grey 458



Beige 527



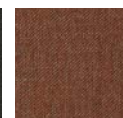
Anthracite 528



Beige 904



Anthracite 905



Rust 906



Grey 907

Technical facts:

1. Jensen Superior Topper with Innergetic® Latex
2. Jensen Alloy® 3.0 Pocket 16 cm with Jensen® Original Zone System
3. Innergetic® Latex 4 cm
4. Jensen Support Pocket 12,5 cm
5. Jensen Reflect Pocket 7 cm





Jensen Bliss

The Jensen Bliss is optimal sleep quality while giving room for plenty of flexibility. As one of our most exclusive beds, it is made to improve your quality of life both through its sleep comfort and design. The colour palette of the fabrics is inspired by the Nordic nature, spanning deep shades of blue, green and anthracite to lighter colours of grey and beige.

The flexibility is also evident when it comes to your options of tailoring the comfort of the Jensen Bliss. For example you can fit it with Jensen Exact Comfort as an add-on, or go all the way and make it an adjustable bed with the Jensen Active II motorised frame.



The sleep comfort of the Jensen Bliss is centered around the Jensen® Original Zone System with Jensen Aloy® 2.1 Pocket Spring System (14 cm). This provides an extra soft and long shoulder zone that gives great flexibility and space for your shoulders. Jensen Aloy® 2.1 also has built-in support for the lower back region. The sleep comfort can be further enhanced by adding Jensen Exact Comfort Adjustment or full adjustable functionality through the Jensen Aqtive II motorised frame.

Jensen Bliss has an exclusive look that can be paired with several specially designed accessories. Order your bed together with the fabrics, legs, headboard and bedside table of your choice to make your bedroom complete.

Available in all standard sizes and can also be ordered to measure. Features whole sleeping surface on all continental beds and Nordic Seamless.





Our continental beds and Nordic Seamless beds have whole sleeping surfaces, without hard edges in the middle. However, the technology still allows one to choose the degree of firmness individually.

FACTS:

Firmness:

Soft, medium, firm or extra firm sleep comfort.

Model:

Reversible



Nordic



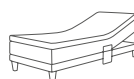
Nordic Seamless



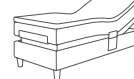
Continental



Lean



Aqtive II



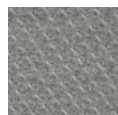
Available colours:



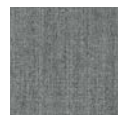
Beige 030
(base)



Beige 031



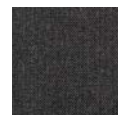
Grey 015
(base)



Grey 016



Oyster Grey
320



Evening
Anthracite 330



Ivory 211
(base)



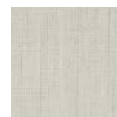
Ivory 221



Olive 213
(base)



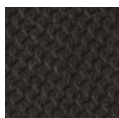
Olive 223



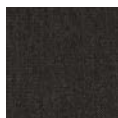
Natural Beige
301



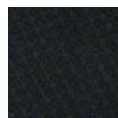
Golden Sand
310



Anthracite 010
(base)



Anthracite 011



Dark blue 020
(base)



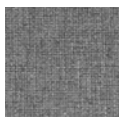
Dark blue 021



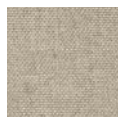
Misty Mint
329



Midnight Blue
328



Grey 458



Beige 527



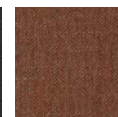
Anthracite 528



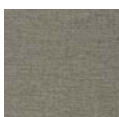
Beige 904



Anthracite 905



Rust 906



Grey 907

Technical facts:

1. Jensen Superior Topper with Innergetic® Latex
2. Jensen Alloy® 2.1 Pocket 14 cm with Jensen® Original Zone System
3. Innergetic® Latex 4 cm
4. Jensen Support Pocket 12,5 cm
5. Jensen Reflect Pocket 7 cm





Jensen Countess

The Jensen Countess is one of our most popular beds. And it's not hard to understand why. The performance of the Aloy® 2.1 Spring System together with the Jensen® Original Zone System makes this bed a great choice for anyone who wants premium sleep comfort.

The elegant design is elevated by the lush textile work. In combination with a wide selection of colours, you have every possibility of making the Jensen Countess the centerpiece of your bedroom.



The Aloy® 2.1 Spring System (12,5 cm) of the Jensen Countess supports and adapts to your body. The extra soft and long shoulder zone provides great flexibility and space for your shoulders. The spring system also features built-in support for the lower back. The bed can be ordered as a reversible, Nordic, continental or as an adjustable combined with the luxurious Aqive II motorised frame.

Available in all standard sizes and can also be ordered to measure. Features whole sleeping surface on all continental beds and Nordic Seamless.





FACTS:

Firmness:

Soft, medium, firm or extra firm sleep comfort.

Model:

Reversible



Nordic



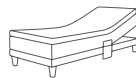
Nordic Seamless



Continental



Lean



Aqtive II



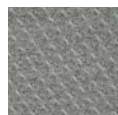
Available colours:



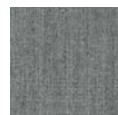
Beige 030
(base)



Beige 031



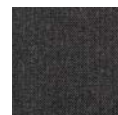
Grey 015
(base)



Grey 016



Oyster Grey
320



Evening
Anthracite 330



Ivory 211
(base)



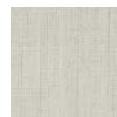
Ivory 221



Olive 213
(base)



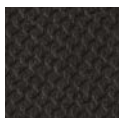
Olive 223



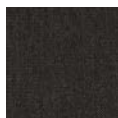
Natural Beige
301



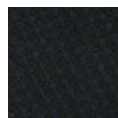
Golden Sand
310



Anthracite 010
(base)



Anthracite 011



Dark blue 020
(base)



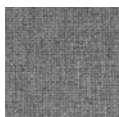
Dark blue 021



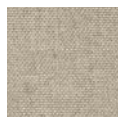
Misty Mint
329



Midnight Blue
328



Grey 458



Beige 527



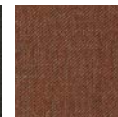
Anthracite 528



Beige 904



Anthracite 905



Rust 906



Grey 907



Our continental beds and Nordic Seamless beds have whole sleeping surfaces, without hard edges in the middle. However, the technology still allows one to choose the degree of firmness individually.

Technical facts:

1. Jensen Embrace Topper with Innergetic® Latex
2. Alloy® 2.1 Pocket 12,5 cm with Jensen® Original Zone System
3. Innergetic® Latex 4 cm
4. Jensen Support Pocket 12,5 cm
5. Jensen Reflect Pocket 7 cm





Jensen Premiere

The Jensen Premiere is an excellent introduction to Jensen sleep comfort. Even though it's the most affordable model in the Superior Collection, it still provides all the essentials for a good night's sleep. For example, it's equipped with the Jensen® Original Zone System that gives your body

precise support. Jensen Premiere is made with the same high demands on quality as every Jensen bed. This is evident when examining the details closely, such as the seams and exquisite double stitching.





Jensen Premiere

The Jensen Premiere is equipped with Jensen® Original Zone System. It also features Jensen Sense Pocket Spring System with built-in lower back support. Finally, the inclusion of a double spring system in the base contributes to the great sleep comfort.

The Jensen Premiere can be ordered as a reversible, Nordic and continental

Available in all standard sizes and can also be ordered to measure. Features whole sleeping surface on all continental beds and Nordic Seamless.





Our continental beds and Nordic Seamless beds have whole sleeping surfaces, without hard edges in the middle. However, the technology still allows one to choose the degree of firmness individually.

FACTS:

Firmness:

Medium, firm or extra firm sleep comfort.

Model:

Reversible



Nordic



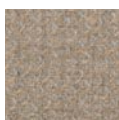
Nordic Seamless



Continental



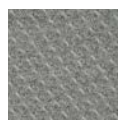
Available colours:



Beige 030
(base)



Beige 031



Grey 015
(base)



Grey 016



Oyster Grey
320



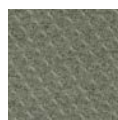
Evening
Anthracite 330



Ivory 211
(base)



Ivory 221



Olive 213
(base)



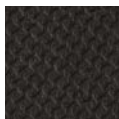
Olive 223



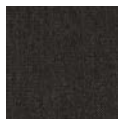
Natural Beige
301



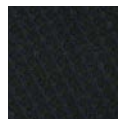
Golden Sand
310



Anthracite 010
(base)



Anthracite 011



Dark blue 020
(base)



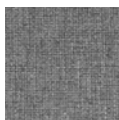
Dark blue 021



Misty Mint
329



Midnight Blue
328



Grey 458



Beige 527



Anthracite 528



Beige 904



Anthracite 905



Rust 906



Grey 907

Technical facts:

1. Jensen Embrace with Innergetic® Latex
2. Jensen Alloy 1.0
(12,5 cm) with Jensen® Original Zone System
3. Latex 3 cm
4. Jensen Support Pocket 12,5 cm





Mattress toppers.

The right mattress topper helps make a good night's sleep even better. It should feel soft and enveloping – but not clammy. All our bed mattresses are designed for this purpose. An optimized zone with denser quilt at the shoulders and hips increases the elasticity of the fabric, which together with Jensen's patented zone system allows your shoulder and hip to sink into the mattress, providing sleep comfort that helps you wake up completely rested.



The mattress topper covers are separable, removable and washable.



Jensen TempSmart™

This mattress topper has a thermo-regulation system that actively balances the temperature changes that can disturb your sleep. This innovative technology consists of millions of microcapsules, adapting constantly to your skin's climate, by absorbing, storing and releasing excess heat as needed. In this way, the microcapsules keep you within your comfort zone, with great sleep quality as a result. Height: 7,5 cm



Jensen Superior

This voluminous mattress topper has a lovely, quilted design. The fabrics properties make it feel extra comfortable against the body, and provide a delicate and luxurious experience. The Innergetic® Latex filling material is both perforated and profiled, resulting in a softer and a firmer side. The open cell structure ensures optimal ventilation, enabling a clean and fresh bed climate. Height: 10 cm




Jensen Embrace

Jensen Embrace topper has an Innergetic® latex filling. The open cell structure of Innergetic® latex provides excellent air and moisture transportation. Latex inhibits bacteria and dust mite, resulting in a cleaner and healthier bed climate. Innergetic® latex with extra stretch feels both embracing and soft, while the zone-divided spring system provides the necessary support. Height: 7,5 cm.



Split topper

This mattress topper is developed especially for adjustable beds. It covers the entire surface avoiding the gap between sleeping partners. The top part of the topper is split, allowing you to raise or lower the head end of your bed without disturbing your partner. The foot end is just like a regular mattress topper. Split Topper is available for TempSmart™, Superior and Embrace Height: 7,5-10 cm



Details are
important to us.
It's that little
extra that does so
much to create
the best overall
impression.

Customized by you.

Details are important to us. It's that little extra that does so much to create the best overall impression. That is why we have spent so much time developing our range of accessories, which has grown significantly over the recent years.

We can now offer a complete solution, with everything from various legs, headboards and bedside tables to ottomans. The accessories are available for all Jensen beds, and all fabric elements are of course matched to the colour and texture of the bed. Everything to create that unique ensemble.







Jensen SoftSheet.

Fits Jensen mattress toppers perfectly and is also available for split toppers. Made from 100% cotton satin in a very high quality that gives a soft and silky feeling against the skin. Washable at 60°C. Jensen SoftSheet carries the EU-flower and is Oeko-Tex approved.

Mattress topper protection.

With a high quality mattress topper in your bed, you will sleep better. To keep it nice and clean and to reduce wear, we advise that you use a mattress topper protector, that shields the bed from dirt, dust and moisture. All the while giving you first class sleep comfort.

Jensen SoftProtect mattress topper

The Jensen SoftProtect mattress topper protection is practical and very easy to put on and remove. The surface is wipeable and can also be machine washed if needed.

The material is thin and flexible with a surface that is treated to resist moisture while still letting air through and allowing the bed to ventilate. The quality is soft and comfortable, with stretch in the fabric, which means that the cover shapes itself to the mattress topper and provides both good sleep comfort and protection over the entire mattress surface.

Water repellent BAYGARD® WRS

Jensen SoftProtect contains BAYGARD® WRS, which is composed of special polymers that ensure a high and durable water repellent effect. BAYGARD® WRS do not contain any harmful substances such as heavy metals or formaldehyde.





Please visit jensen-beds.com
for complete information.



Headboards.

Complete your bed with a nice headboard. Our assortment is available in different designs, from classic to modern so you can find something that suits your interior design style.



1.



2.

1. Icon Headboard. H 160 cm. D 7cm middle section, side panels 4 cm. W 180 – 290 cm. **2. Dione Portrait.** H 120 cm. D 5,1 cm. (40 cm wider than bed). **3. Fenix Headboard.** H 95 cm. D 10 cm. W 90-210 cm. **4. Fenix Plus Headboard.** Available with or without seams. H 125 cm. D 13 cm. W 90-210 cm. **5. Dorchester Headboard.** H 140 cm. D 8 cm. W 90-210 cm. **6. Fenix Decor Headboard.** H 125 cm. D 15 cm. W 90-210 cm. **7. Nest Headboard.** H 112 cm. D 8 cm. W 110-230 cm. **8. Cozy Headboard.** H 132 cm + 5 cm wings. D 16 cm. W 160-250 cm + 2x5 cm wings. **9. Cloud Headboard.** H 130 cm. D 18 cm + 5 cm wings. W 120-210 cm. **10. Cozy Slim Headboard.** H 125 cm + 5 cm wings. D 7,5 cm. W 121-211 cm + 2x5 cm wings.

3.



4.



5.



6.



7.



8.



9.



10.





The flying optics legs
gives the impression
of the bed floating
above the floor.

Bed legs.

You can adapt your Jensen bed with legs in several different models and materials. It gives you the opportunity to make your bed fit perfectly with the decor in the bedroom.



1. Aluminium Legs. Round. H 14 or 23 cm. **2. Round Slim.** Oak, birch, white washed, black steel, steel or brass. H 14 or 18 cm. **3. Support Legs (x2).** H 14, 18 or 23-29 cm. **4. Eicon.** Oiled oak, black or white washed. H 14 or 18 cm. **5. Triangle.** Brass coated aluminium, powder lacquered black aluminium, polished black aluminium or polished aluminium. H 14 cm. **6. Quadrangular.** Oiled oak, black or white washed. H 14 or 23 cm. **7. Flying optics.** Black powder coated steel. H 14 cm. Not compatible with adjustable beds.

Bedside tables.

The bedside table is both a piece of furniture and a practical surface for everything you want close at hand without having to leave your bed. Our bedside tables are fitted with smart functions, such as the hidden space for storage in Charon.



Please visit jensen-beds.com for complete information.



Available finishes:



Oak



Black



Birch



White washed

1. Add-on Floor Bedside Table. Solid wood top. Oiled oak, black oak, white washed or birch. Black powder lacquered steel legs. H 58 cm. Table: 38x38 cm. **2. Add-on Bedside Table.** Fastened on the bed. Solid wood top in oiled oak, black oak, white washed or birch. Powder lacquered black steel base. Adjustable height, +/- 15 cm. Table: 38x30 cm. **3. Add-on Sliding Bedside Table.** Fastened on the bed. Solid wood top in oiled oak, black oak, white washed or birch. Powder lacquered black steel base. Table: 38x30 cm. Sliding effect without height adjustment. Can be delivered to Jensen Lean and Jensen Active II beds. **4. Charon Bedside Table.** With black legs and table top in oak, white washed or black. H 62 cm. D 35 cm. W 39 cm. **5. Eicon Bedside Table.** Solid wood top. Oak, white washed or black. Drawer with soft close-function. Leather details and practical interior clasp for a charging cable. H 62 cm. D 34,8 cm. W 39 cm. **6. Eicon Tall Bedside Table.** H 72,5 cm. D 40 cm. W 45 cm. **7. Eicon Wall Bedside Table.** Can be placed attached to the wall. H 72,5 cm. D 40 cm. W 45 cm.





Ottomans and trays.

1.



2.



3.



4.



1. Sit-on Ottoman. Solid wood sitting surface in oiled oak, black, white washed, or birch. Black powder-coated steel base. H 44 cm. W 118 cm. **2. Add-on Tray.** Solid wood top in oak, black, white washed or birch. Foldable legs in powder lacquered black steel. H 25 cm (H 4,2 cm folded). D 38 cm. W 60 cm. **3. Add-on Pocket.** Storage pocket that is fastened to the bed. Available in all Jensen bed fabrics. 33x66 cm. **4. Saturn Ottoman.** Exclusive fabric covered ottoman with storage space. Available in all Jensen bed fabrics. H 31,5 cm (without legs). D 38 cm. W 150 cm.

Lamps.

Please visit jensen-beds.com
for complete information.



1.



1. Add-on Bed Lamp. Fastened to the bed. Black powder coated steel.



