

IT'S NOT  
JUST  
A BED.  
IT'S A JENSEN.



Designed for Sleep Comfort



JENSEN  
*Signature*  
COLLECTION

14 FEBRUARY

# 1947

Jensen was founded; at that time, its name was Jensen & Birkeland. In the beginning, chairs and sofas were its main products.

1952

The first sprung mattress, named *Svella*, is launched.

1955

The sofa-bed *Siesta* is launched.

1960

The company name is changed from Jensen & Birkeland to Jensen & Co.

1975

Jensen purchases Thors Fabrikker of Trondheim, a company that produces 5,000 mattresses every year.

1980

At the beginning of the 1980s the decision was made to focus only on the production of beds.



1984

The new factory at Sand, just outside Svelvik, begins production with 28 employees. The export of beds to Denmark starts.

1990

Jensen takes a new step developing optimal sleep comfort, starting a close collaboration with physiotherapists.

1992

*Jensen Vital* is launched, the first adjustable bed on the market. A couple of years later it is possible to purchase Jensen beds in Sweden, Finland and Iceland.



1998

A revolution in sleep comfort is launched. The *Jensen Original Zone System* attracts considerable interest, from both consumers and other mattress producers. *Read more on pages 8-9.*



2006

Jensen is awarded "Super Brand" status in Norway

2010

Sleep comfort is further improved when the technically advanced *Aloy®* spring system is launched.

2014

The innovative *Jensen Exact Comfort Adjustment* is launched, making it possible to adjust your bed's firmness depending on your mood. *Read more on pages 18-19.*

2019

Say hello to your new adjustable bed. Adjust bed position using voice control.



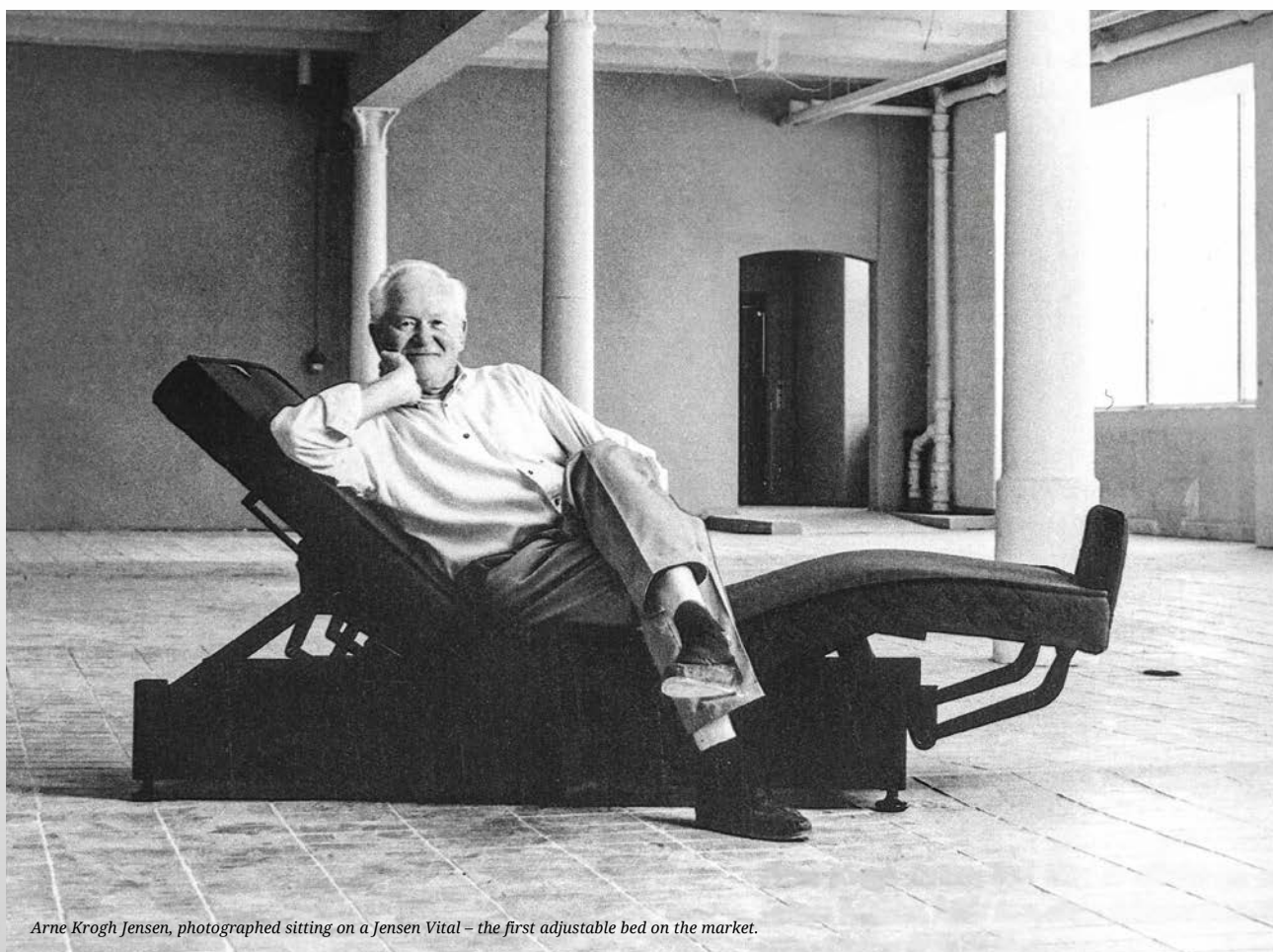
2020

*Aloy® 3.0* is launched. Our newest innovation within advanced spring systems. Patented and exclusive for Jensen. *Read more on pages 10-11.*



Today you will find Jensen in more than 20 countries – and we are still pushing the limits when it comes to sleep comfort.





Arne Krogh Jensen, photographed sitting on a Jensen Vital – the first adjustable bed on the market.

## MADE IN NORWAY SINCE 1947

Today, Jensen can proudly call itself the leading brand in Europe for beds and mattresses. Our history dates back to 14 February 1947, when a wave of optimism hit Norway in the wake of World War II. This optimism was also descriptive of the Jensen family.

At a time when access to materials was limited, one had to use what was already there. The first Jensen mattresses were in fact made from horsehair and cotton wool. Naturally, much has changed since then, but the most important part lives on – our struggle to achieve optimal sleep comfort.

We protect our roots and are still producing all our beds in beautiful Svelvik, in Vestfold county. The fact that our beds are

“Made in Norway” is a testament to the fact that our products maintain the highest standards of quality.

At the same time, they represent the very best of Scandinavian design. By combining nature-inspired materials and textiles with timeless shapes, we create products with magnificent sleep comfort that look beautiful.

Because of our history, inheritance and acquired knowledge, Jensen possesses a unique ability. That is why we allow ourselves to say that the sleep comfort in a Jensen bed is truly extraordinary.





## EXPERTISE, CRAFTSMANSHIP AND INNOVATIVE DESIGN

We have been passionate bedmakers since 1947. We combine expertise, craftsmanship and innovative design to give you the very best sleep comfort possible.





## A PASSION FOR CRAFTSMANSHIP

With more than 70 years of craftsmanship experience, Jensen is far ahead in the development of new products and functions.

By combining nature-inspired materials and textiles with timeless shapes, we create products with magnificent sleep comfort that look beautiful.

The bed is much more than just a place to sleep. It is a part of our lives and our lifestyle. That is why our team of developers work tirelessly on finding new and innovative solutions for how beds and bedrooms can be elegantly combined. Many of the most innovative products on the market carry the Jensen signature.

We have twice been awarded The Award for Design Excellence from the Norwegian Design Council.

We have the experience, the genuine craftsmanship tradition, the competence and innovative solutions to enable us to help you with your sleep. We have a passion for sleep comfort, great focus on quality and design and our attention focussed on the future. You can trust us regarding your sleep.

You can also trust that Jensen is committed to protecting the environment. Most Jensen products carry the Swan label. This means that they satisfy strict requirements regarding the product's environmental impact throughout its lifespan.

Our production takes place under fair conditions and with material not harmful to people or nature.



## POWERED BY JENSEN SLEEP®

Proper revitalisation is the key to a good tomorrow. You need quality sleep to be energised in your daily life, and sleep comfort is necessary in order to wake up well rested. Our bodies need the night to prepare mind and body for a fresh and happy tomorrow.







## IT'S NOT JUST SLEEP, IT'S JENSEN SLEEP

Sleep is a prerequisite for life – an essential state that people can't survive without for very long. In the short term, poor or reduced sleep lead to difficulties with concentration, mood swings and makes it hazardous to drive. In the long term, it leads to reduced resistance to illness, accelerates the ageing process, drains us of energy and has all kinds of negative social consequences. That is why we have spent over 7 decades giving people a better night's sleep.

Achieving the ultimate sleep comfort requires knowledge about bodies and sleep – and we have that. For more than 70 years our focus on creating the best sleep comfort imaginable has been a driving force. The process is being led by a team of product developers, in which our physiotherapist is essential.

Through our physiotherapist's knowledge, we ensure that the products developed are ideal for the body, regardless of weight, height, shape and preferred sleeping position. He is crucial when we're testing new products and your guarantor that Jensen are always working to find the best possible solutions for improved sleep comfort.

For rigorous external testing of our products, we cooperate with the AEH Institute (a neutral Swiss institute for technology) which is a specialist within work, health and ergonomics.

Every bed is certified and undergoes thorough testing in connection with ergonomics, hygiene, bed climate and durability.



**SOFTER  
ZONE**

**FIRMER  
ZONE**



## HEAVENLY SLEEP — EVERY NIGHT

### JENSEN® ORIGINAL ZONE SYSTEM

Jensen® Original Zone System provides correct support for the entire body while you are resting and sleeping. The combination of the lower back support with the soft shoulder zone gives you a whole new sleep experience. The founding principle for our zone system is as self-evident as it is natural: most of us are wider around the hips and shoulders, while the waist, carrying many of the body's organs, is heavier and usually more narrow.

Since it's the mattress's task to carry the body, the division into zones provides a more even and comfortable support, where the shoulders and hips sink deeper into the mattress and the waist enjoys a firmer support. The result is the same, whether you sleep on your back or side.





## THE CORRECT SLEEPING POSITION



### MATTRESS IS TOO FIRM ↗

Hips and shoulders do not sink into the mattress, resulting in too little support for the waist and lower back.



### MATTRESS IS TOO SOFT ↗

The body sinks too far into the mattress, like a hammock. The spine gets a curved shape.



### A PERFECT MATTRESS ↗

The mattress provides even and comfortable support for the body. Hips and shoulders sink into the mattress, which supports the waist and lower back perfectly.



### ON YOUR BACK ↗

The best sleeping position is on your back, given that you have a relatively soft mattress or an adjustable bed.

*In order to achieve a good night's sleep with a comfortable rest for the entire body, our experts recommend that you sleep either on your side or back. Other sleeping positions than this will put a larger strain on your body, assuming that you are physically able to sleep on your side or back, and that you don't have any health problems or handicaps to make this hard or impossible. Often it takes some time getting used to a new sleeping position. But when it's learned, and your body is used to it, you will discover that you sleep more calmly and get a greater benefit from the hours spent in bed.*

# ALOY® 3.0

## OUR NEWEST INNOVATION WITHIN ADVANCED SPRING SYSTEMS.

Aloy® 3.0 takes care of the entire body, including the hips. Just like the shoulder area, the hips are an exposed area of the body. The tendons that capsule the hips make them extra sensitive to pressure when you lie on your side.





## WAKE UP RESTED AND READY FOR A NEW DAY

### ALOY® 3.0 – PATENTED AND EXCLUSIVE FOR JENSEN.

With Aloy® 3.0, the hip zone in the spring system gets improved carrying capacity while allowing the hip to sink even further into the mattress. For those who prefer to sleep on their back, Aloy® 3.0 also provides comfortable back support. The combination of Aloy® 3.0 and our carefully selected upholstery materials provide a deeper comfort that avoid tossing and turning. The result is a deeper and undisturbed sleep.

1

Spring 1 provide softness and comfort, and the body will sink deeper into the mattress

2

Spring 2 form to the body and give stability.

3

Spring 3 provide necessary support.

*Spring 2 and 3 works together to relieve the pressure on the muscles resulting in improved blood circulation. The result will be a deeper and undisturbed sleep.*







J4 Nordic Line, Beige 541. Dione Portrait Headboard, Beige 548. Round slim legs, black. Add-On bedside table, oak. Sit-On bed bench, oak. Add-On Lamps.

## WE ARE PROUD OF OUR BEDS

### HERE ARE A FEW REASONS WHY.



**JENSEN® ORIGINAL ZONE SYSTEM** combines a soft shoulder zone with firm support for the lower back.



**JENSEN POCKET ON POCKET TECHNOLOGY** is our brand new and upgraded spring system. Jensen Pocket on Pocket in all layers of the bed lets the body sink deeper into the mattress, while getting the support it needs. Pocket springs in the lower spring section provide a stable comfort without annoying sideways movements (double beds).



**JENSEN ALOY®** is our best and most flexible spring system, continuously adapting to your changing sleeping position and weight distribution, with a softer shoulder zone.



**WASHABLE** All sleep surfaces are washable at 60°C for optimal hygiene.



**JENSEN® GUARANTEE AND SAFETY** All Jensen beds come with a five-year full guarantee and a 25-year guarantee against frame and spring breakages.



**MADE IN NORWAY** All Jensen beds and mattresses are designed and manufactured in Norway.



**A WHOLE SLEEPING SURFACE** Our continental beds and Seamless Nordic beds have whole sleeping surfaces, without hard edges in the middle. However, the technology still allows one to choose the degree of firmness individually.



**STRETCH** in all sleeping surfaces lets the body sink into the bed and get support and relief from the zone-divided spring system.



**TESTED AND APPROVED** Jensen beds are tested and approved by AEH, a neutral test institute in Zurich, Switzerland. Every bed is certified and undergoes thorough testing in connection with ergonomics, hygiene, bed climate and durability.



**THE SWAN** Most of Jensen products carry the Swan label, out of consideration for both you and the environment. Any product labelled with the Swan also has to satisfy strict requirements regarding the product's environmental impact throughout its lifespan – from raw materials to disposal or recycling.



**FSC®** assures all wood is sourced and processed in a responsible and socially beneficial manner. All our wooden frames are FSC® approved.



# CHOOSE THE RIGHT BED

*There is a lot to consider before you choose a new bed. We have many different types of beds in our product range.*



01



02



03



04

## 1. REVERSIBLE MATTRESSES

We have a large range of reversible mattresses with different qualities, which can be used with existing bed frames.

## 2. NORDIC

From the reversible mattresses, the next step in the Jensen bed range is the Nordic bed. The Nordic features a dual-sprung Jensen pocket spring system with Jensen Pocket on Pocket Technology.

## 3. CONTINENTAL BED

In a continental bed you can experience Jensen sleep comfort at its very best, with Jensen Pocket on Pocket Technology. The bed features double mattresses with up to three individual Jensen Pocket spring systems.

## 4. ADJUSTABLE BEDS

With an adjustable Jensen bed, the bed gets a completely new function. This allows many new possibilities for personal comfort. Why not watch the Sunday film from your adjustable bed, instead of the living room couch?







## JENSEN NORDIC LINE

Jensen Nordic Line transforms the traditional Nordic bed from a rather heavy to a flowingly elegant bed concept, which can easily be adjusted to different bedrooms. Jensen Nordic Line consists of a comfortable bed with Jensen's Original Zone System, Pocket on Pocket Technology and a whole sleeping surface without hard edges in the middle.

The concept includes a wide range of accessories, founded upon Nordic design traditions, where the quality can be seen in the skilled craft and choice of materials. The accessories are simple and flexible, and includes a large selection of legs, headboards and bedside tables.

*Read more about our comfort levels for Nordic Line beds on pages 37-41.*

## JENSEN CONTINENTAL BEDS

In a continental bed you can experience Jensen sleep comfort at its very best, with Jensen Pocket on Pocket Technology. The bed features double mattresses with up to three individual Jensen Pocket spring systems. The beds have whole sleeping surfaces, without hard edges in the middle. However, the technology still allows one to choose the degree of firmness individually.

*Read more about our comfort levels for Continental beds on pages 37-42.*









J6 Continental Seamless with Jensen Exact Comfort Adjustment, Beige 152. Dione Plus headboard. Eicon legs, oak. Eicon bedside table, oak.

# JENSEN EXACT COMFORT ADJUSTMENT

Adjust the firmness of your Nordic or Continental bed with a push of a button. The comfort can be made either softer or firmer. Let your mood determine whether you need more support or relief.

+	—	=
COMFORT IS FIRMER	COMFORT IS SOFTER	BED IS FLAT







WITH OUR NEW APP FOR JENSEN EXACT  
COMFORT ADJUSTMENT YOU CAN EASILY  
ADJUST THE FIRMNESS OF YOUR BED.





**SAY HELLO**  
TO YOUR NEW ADJUSTABLE BED.



*Adjust the bed position by  
using voice control.*





J3 Dream Seamless, Dark Blue 545. Dione Headboard, Dark Blue 552.  
Add-On Floor bedside table, oak. Triangle legs, aluminum.

## JENSEN DREAM

Once you have tried an adjustable bed, you will probably not want to go back to a regular bed.

Jensen Dream is the introductory model in Jensen's adjustable bed programme. Dream has a functional system with the most essential features. Jensen Dream Adjustable is based on a stepless system that can either be placed on a bed base or have legs attached. The mattress on the base is a Jensen reversible mattress.

*Read more about our comfort levels for Dream on page 37-38.*



With the Headrest function, you adapt your bed so the neck and head are always in the right position when you are sitting upright.



Stepless adjustment up/down, for the head end individually or the head and foot end at the same time.



It is possible to connect two beds in parallel so that they can be synchronised and controlled by one remote control.



Manual emergency mechanism that allows the bed to be lowered down to a horizontal position in the event of a power failure.



Max 0.1 watt in standby according to the EU's directive.



With our app for adjustable beds you can easily find and save your favourite position.



Adjust the bed position by using voice control.



J5 Active II Seamless, Grey 543. Dione Portrait Headboard, Grey 550.  
Eicon legs, white washed. Eicon bedside table, white washed.





**SAY HELLO**  
TO YOUR NEW ADJUSTABLE BED.



Adjust the bed position by  
using voice control.



## JENSEN AQTIVE II

Jensen Aqtive II is elegant and looks like a continental divan set when it is inactive. The technical solution is concealed by the textile-covered bed frame. By choosing Seamless textile solution the entire bed frame is covered. Four legs instead of the usual eight contribute to the beds' new, elegant and unique look.

Jensen Aqtive II is dual-sprung with spring systems in both the reversible mattress and the base. The construction gives the bed great stability. With the remote, you have step-free control of the head and foot ends of the bed, driven by two powerful, but almost silent, electric engines.

*Read more about our comfort levels for Aqtive II on page 39-41.*



With the Headrest function, you adapt your bed so the neck and head are always in the right position when you are sitting upright.



A practical light under the bed can be turned on during the night, if you need it, without disturbing your partner.



Stepless adjustment up/down, for the head end individually or the head and foot end at the same time.



It is possible to connect two beds in parallel, so that they can be synchronised and controlled by one remote control.



Manual emergency mechanism that allows the bed to be lowered down to a horizontal position in the event of a power failure.



Memory function for saving your favourite position.



Max 0.1 watt in standby according to the EU's directive.



With our app for adjustable beds you can easily find your favourite position.



Adjust the bed position by using voice control.





## THE INNERMOST LAYER

The right mattress topper contributes to making a good night's sleep even better. Mattress toppers should feel embracing and soft, while the zone-divided spring system provides the necessary support, without becoming too warm or moist. Design and the choice of materials are not left to chance. All our mattress toppers' designs have been improved in order to increase stretch, beauty and softness. A further development of the filling materials allows increased individual adjustment, through a softer and a firmer side. Choose between Jensen SoftLine I, SoftLine II, SoftLine III, Jensen StarRose and Jensen TempSmart™.



*All Jensen mattress toppers carry the Swan label, out of consideration for both you and the environment. Any product labelled with the Swan also has to satisfy strict requirements regarding the product's environmental impact throughout its lifespan – from raw materials to disposal or recycling.*



# THE SOFTLINE COLLECTION

*Jensen's design team has further developed this collection, using Norway's heritage and traditions as a starting point. They were inspired by traditional Norwegian knitting patterns and details from Norwegian national costume.*



## 1. JENSEN SOFTLINE I

Jensen SoftLine I features a Cellex XS 5 cm filling. Cellex XS has one smooth and one grooved side. Most people find the grooved side softer and the smooth side firmer. Cellex XS provides great air and moisture transportation. SoftLine I contains Lyocell with Sensity™, which keeps the bed fresh, dry and more hygienic. **Height: 8 cm**

## 2. JENSEN SOFTLINE II

Jensen SoftLine II features a Cellex XO 6.5 cm filling. Cellex XO has one smooth and one grooved side. Most people find the grooved side softer and the smooth side firmer. Cellex XO provides great air and

moisture transportation. SoftLine II contains Lyocell with Sensity™, which keeps the bed fresh, dry and more hygienic. **Height: 9 cm**

## 3. JENSEN SOFTLINE III

Jensen SoftLine III features an Innergetic® Latex 5 cm filling. The open cell structure of Innergetic® provides excellent air and moisture transportation. The filling material is both perforated and grooved. The perforation ensures optimal ventilation. Most people find the grooved side softer and the smooth side firmer. Bacteria and dust mite dislike latex, resulting in a cleaner and healthier bed climate. **Height: 9 cm**



*The mattress covers are separable, removable and washable. All Jensen mattress toppers can be washed at 60°C. Make sure to check the laundry size for your washing machine. The cover is made from high-quality fibres with the ability to drain large amounts of water, and this can lead to overheating and shrinkage if the machine is too small. We recommend washing at a laundrette if you are in doubt.*



## JENSEN TEMPSMART™

*TempSmart™ is a mattress topper with a thermo-regulation system that actively balances the temperature changes that can disturb your sleep.*

This innovative technology consists of millions of microcapsules, adapting constantly to your skin's climate, by absorbing, storing and releasing excess heat as needed. In this way, the microcapsules create a buffer against overheating/perspiration as well as cold/shivering and keep you within your comfort zone, with great sleep quality as a result. That is why TempSmart™ is ideal for anyone who has trouble with keeping a steady body temperature through the night.

TempSmart™ features a core of Innergetic® latex with an open cell structure, for optimum air and moisture transportation. The filling material is both perforated and grooved. The perforation ensures optimum ventilation, while the grooving provides a softer and firmer side. Bacteria and dust mite dislike latex, resulting in a cleaner and healthier bed climate. The mattress topper also has Soft Touch for an extra soft feel.

**Height: 9 cm**





## JENSEN OPTIMA

*The voluminous and luxurious mattress topper has a magnificent quilt design.  
Design and choice of materials are carefully selected.*

Optima features a core of Innergetic® latex with an open cell structure, for optimum air and moisture transportation. The filling material is both perforated and grooved. The perforation ensures optimum ventilation, while the

grooving provides a softer and firmer side. Bacteria and dust mite dislike latex, resulting in a cleaner and healthier bed climate. Washable at 60°C.

**Height: 10 cm**



## SPLIT TOPPER

*A mattress topper developed for those who have an adjustable bed and desire a mattress topper that covers the entire bed, to avoid having a gap between sleeping partners.*

The top part of the topper is split, allowing you to raise or lower the head end of your bed without disturbing your partner. The foot end is just like a regular mattress topper.

The Split Topper solution is available for SoftLine I, SoftLine II, SoftLine III, TempSmart™ and Optima.



## JENSEN SOFTSHEET

Jensen Soft sheet is made from 100% cotton satin in a very high quality. The cotton gives a soft and silky feeling against the skin. The sheet fits perfectly to Jensen mattress toppers. They are also available for split toppers. Washable at 60°C.

Jensen Soft Sheet carries the EU-flower and is Oeko-Tex approved.

Colour: white.



## JENSEN SOFT PROTECT

Mattress topper protection

To keep the topper nice and clean and at the same time reduce wear and tear, you need mattress topper protection. Jensen SoftProtect protects the mattress topper from stains and dirt and at the same time it provides you with optimal sleep comfort. Washable at 60°C. Also available for Split Topper.



## JENSEN PERFECTPILLOW

Jensen PerfectPillow is filled with thousands of fibre balls that change shape after your head. The height and springiness of the pillow can be modified by removing filling until you find the perfect support for your head and shoulders. The fibre balls maintain their springiness for a long time and can endure many washes. If the pillow collapses after being washed, simply shake and fluff it a little.

Jensen PerfectPillow can be washed in a washing machine at 60°C, and can also be tumble dried. Please read the washing instructions on the product label.



## JENSEN TEMPSMART™ PILLOW FEATURES A THERMO REGULATION.

A Jensen TempSmart™ pillow features a thermo regulation function that actively balances the temperature changes that can disturb your sleep. This innovative technology consists of millions of microcapsules, adapting constantly to your skin's temperature, by absorbing, storing and releasing excess heat as needed. In this way, the microcapsules create a buffer against overheating/perspiration as well as cold/shivering and keep you within your comfort zone, with great sleep quality as a result. That is why TempSmart™ is ideal for anyone who has trouble keeping a constant body temperature through the night.

Size 50x70 cm.

## JENSEN TRAVELPILLOW

Jensen PerfectPillow in travel size (27x47cm). Shape the pillow the way you want. With Jensen tag. Delivered in a travel bag with embroidered Jensen logo.

Washable at 60°C.



## THAT LITTLE EXTRA

*Details are important to us. It's that little extra that does so much to create the best over all impression. That is why we have spent so much time developing our range of accessories, which has grown significantly over recent years. We can now offer a complete solution, with everything from various legs, headboards and bedside tables to ottomans. The accessories are available for all Jensen Supreme beds, and all textile elements are of course matched to the colour and texture of the bed. All in order to get that unique ensemble.*



01. Add-on bedside table. Dione headboard. 02. Eicon bedside table. 03. Sit-on bed bench. 04. Add-on table lamp.  
 Sit-on and all bedside tables are available in oiled oak, white washed and black. More information about sizes can be found on [jensen-beds.com](http://jensen-beds.com)





05



06



07



08



09



10

05. Dione Portrait headboard. Add-on bedside table. Add-on lamps. 06. Eicon Tall bedside table. 07. Add-on breakfast tray. 08. Dione Plus headboard. 09. Nest headboard. 10. Dione Decor headboard. All bedside tables and the breakfast tray are available in oiled oak, white washed and black. More information about sizes can be found on [Jensen-beds.com](http://Jensen-beds.com)



01



02



03



04



05

01. Dione Decor headboard. Saturn ottoman. Eicon bedside table. 02. Eicon wall bedside table. 03. Plania bedside table. 04. Add-on Floor bedside table. 05. Cozy headboard. Eicon bedside table. All bedside tables are available in oiled oak, white washed and black. More information about sizes can be found on [Jensen-beds.com](http://Jensen-beds.com)





06



07



08



09



10



11

06. Dione Landscape headboard. Add-on bedside table. 07. Add-on Pocket. 08. Charon bedside table. 09. Signature headboard. Eicon Tall bedside table. 10. Diva headboard. Add-on bedside table. Add-on pocket. 11. Add-on lamp. All bedside tables are available in oiled oak, white washed and black. More information about sizes can be found on [Jensen-beds.com](http://Jensen-beds.com)

# TEXTILES INSPIRED BY NATURE

Nature's most beautiful nuances will bring inner peace to your bedroom. We have chosen exclusive furniture textiles of the highest quality imaginable from leading suppliers.

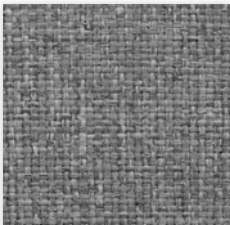
SIGNATURE J2



BEIGE (527)



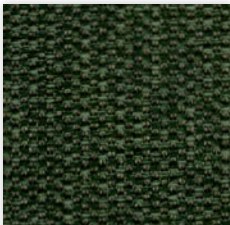
ANTHRACITE (528)



GREY (458)



GREEN (155)



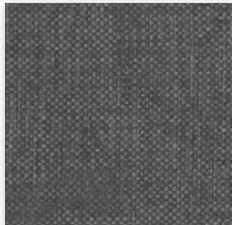
HEADBOARD GREEN (156)



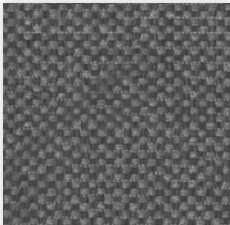
BEIGE (541)



HEADBOARD BEIGE (548)



GREY (543)



HEADBOARD GREY (550)



ANTHRACITE (544)



HEADBOARD ANTHRACITE (551)



DARK BLUE (545)



HEADBOARD DARK BLUE (552)

SIGNATURE J3 / J4 / J5 / J6



## SIGNATURE J5 / J6



BEIGE (564)



ANTHRACITE (565)



BLUE (566)

## SIGNATURE J6



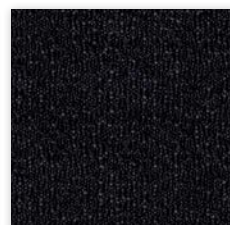
ANTHRACITE (150)



GREY (151)



BEIGE (152)



BLUE (153)

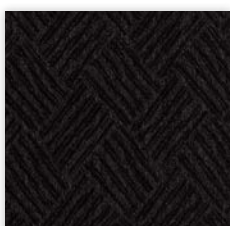


GREEN (154)

## SIGNATURE J8



ANTHRACITE (150)



HEADBOARD ANTHRACITE (850)



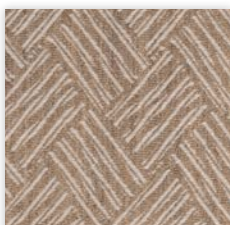
GREY (151)



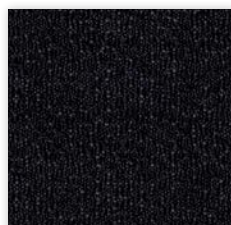
HEADBOARD GREY (851)



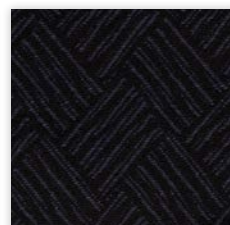
BEIGE (152)



HEADBOARD BEIGE (852)



BLUE (153)



HEADBOARD BLUE (853)



GREEN (154)



HEADBOARD GREEN (854)



### 1. QUADRANGULAR LEGS

14 or 23 cm. Oiled oak, black stained oak or whitewashed.

### 2. ROUNDED SLIM LEGS

14cm. Oak, whitewashed, powder-lacquered steel, polished steel or matt brass.

### 3. ROUNDED SLIM LEGS

18cm. Oak, whitewashed, powder-lacquered steel, polished steel or matt brass.

### 4. ROUNDED ALUMINIUM LEGS

(Diameter 54mm) 14 or 23 cm.

### 5. SUPPORT LEGS (x2)

For 4 legs solution.  
Available for: 14, 18 and 23-29 cm.

### 6. TRIANGLE

14 cm. Matt brass-plated aluminium, black powder-lacquered aluminium, polished black or polished aluminium.

### 7. EICON

14 cm. Oiled oak, white washed or black.

### 8. EICON

18 cm. Oiled oak, white washed or black.

### 9. LAMINATED BED STEAD

Laminated bed frame. 14 cm.  
White or black.

### 10. MISTRAL BED STEAD

14 cm. Oiled oak, black-stained oak or white washed.



## JENSEN SIGNATURE J2



J2 is the introduction model of the Signature Collection. It is a product that gives you good sleep comfort for a reasonable price.

Available in all standard sizes.

### TECHNICAL FACTS

1. Jensen SoftLine I
2. Jensen Intro Pocket 12,5 cm with Jensen® Original Zone system
3. Stopning Cellex XS 3 cm
4. Jensen Support Pocket 12,5 cm

### TENSIONS

Choose between medium, firm and extra firm sleep comfort.

### COMFORT LEVEL



REVERSIBLE



NORDIC



NORDIC SEAMLESS



CONTINENTAL



DREAM

## JENSEN SIGNATURE J3



Jensen Signature J3 is a comfortable bed and a good introduction to Jensen sleep comfort. Jensen J3 has a zoned Sense Pocket spring system with built-in lumbar support.

Available in all standard sizes, special sizes can be made to order.

### TECHNICAL FACTS

1. Jensen SoftLine I
2. Jensen Sense Pocket 2.0 12,5 cm with Jensen® Original Zone system
3. Cellex XS 3 cm
4. Jensen Support Pocket 12,5 cm
5. Jensen Reflect Pocket 7 cm

### TENSIONS

Choose between soft, medium, firm and extra firm sleep comfort.

### COMFORT LEVEL



REVERSIBLE



NORDIC



NORDIC SEAMLESS



CONTINENTAL



DREAM



## JENSEN SIGNATURE J4



The most significant difference between the Jensen Signature J4 and the lower models in the matrix is the spring system. Jensen Signature J4 has Aloy® 2.0, a spring system adapted to your body. Aloy® 2.0 has an extra soft and long shoulder zone that provides great flexibility and space for your shoulders. This provides increased sleep comfort.

Available in all standard sizes, special sizes can be made to order.

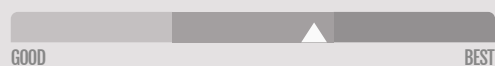
### TECHNICAL FACTS

1. Jensen SoftLine II
2. Aloy® 2.0 Pocket 12,5 cm with Jensen® Original Zone system
3. Cellex XS 3 cm
4. Jensen Support Pocket 12,5 cm
5. Jensen Reflect Pocket 7 cm

### TENSIONS

Choose between soft, medium, firm and extra firm sleep comfort.

### COMFORT LEVEL



REVERSIBLE



NORDIC



NORDIC SEAMLESS



CONTINENTAL



AQTIVE II

# JENSEN SIGNATURE J5



Jensen Signature J5 is an exclusive bed with fantastic sleep comfort. The bed can be tailored with a variety of fabrics, legs, headboards, bedside tables and bed benches. Everything to fit your Jensen Signature J5 in the bedroom.

Jensen Signature J5 has Jensen® Original Zone System with 14 cm Jensen Aloy® 2.0 pocket springs. Jensen Aloy® 2.0 has a soft and wide shoulder zone and built-in lumbar support. Jensen Signature J5 has double seams and a discreet embroidered logo.

Available in all standard sizes, special sizes can be made to order.

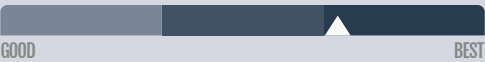
### TECHNICAL FACTS

- 1. Jensen SoftLine III
- 2. Aloy® 2.0 Pocket 14 cm with Jensen® Original Zone system
- 3. Cellex XS 4 cm
- 4. Jensen Support Pocket 12,5 cm
- 5. Jensen Reflect Pocket 7 cm

### TENSIONS

Choose between soft, medium, firm and extra firm sleep comfort.

### COMFORT LEVEL





# JENSEN SIGNATURE J6



Jensen Signature J6 is one of our most exclusive beds. The comfort is magical, as well as the design. A Jensen Signature J6 not only makes your bedroom more beautiful, it also improves your quality of life.

Jensen Signature J6 has Jensen® Original Zone System with 16 cm Jensen Aloy® 3.0 pocket springs. Jensen Aloy® 3.0 is Jensen's most advanced and innovative spring system that provides space for the hip and shoulder and comfortable support for the lower back. Jensen Signature J6 has folding seams on the sides of the reversible mattress, double stitching in all corners and a discreet embroidered logo at the bottom of the frame.

Available in all standard sizes, special sizes can be made to order.

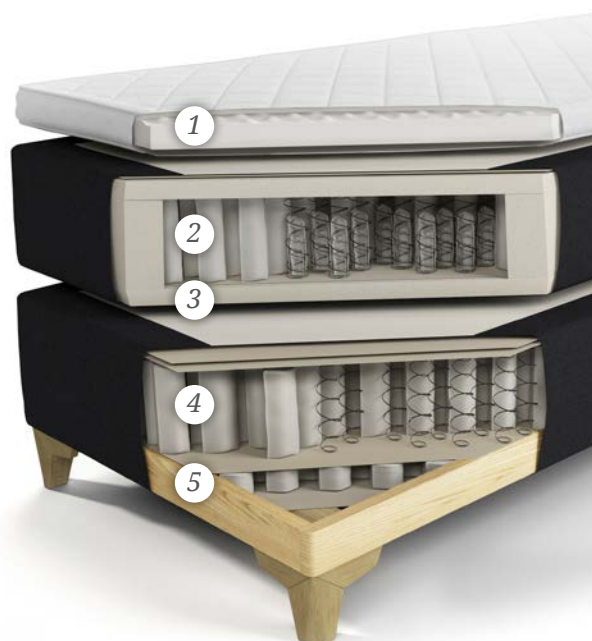
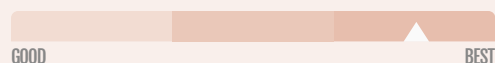
## TECHNICAL FACTS

1. Jensen Optima
2. Aloy® 3.0 Pocket 16 cm with Jensen® Original Zone system
3. Innergetic® Latex 3 cm
4. Jensen Support Pocket 12,5 cm
5. Jensen Reflect Pocket 7 cm

## TENSIONS

Choose between soft, medium, firm and extra firm sleep comfort.

## COMFORT LEVEL



# JENSEN SIGNATURE J8



When it comes to sleep comfort, we aim higher and higher. And with Signature J8, we can proudly present a bed that reaches new heights. The new Jensen Signature J8 is the Signature Collection's highest bed. Being tall is not a goal in itself, but the purpose is to make room for better spring systems and technical solutions. Our new spring system Aloy® 3.0 together with Jensen Exact Comfort adjustment creates a unique bed with the opportunity to tailor the comfort, according to your mood. An innovative step towards even better sleep comfort - a step closer to the clouds.

Available in all standard sizes, special sizes can be made to order.

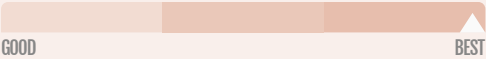
### TECHNICAL FACTS

- 1. Jensen Optima
- 2. Aloy® 3.0 Pocket 16 cm with Jensen® Original Zone system
- 3. Jensen Reflect Pocket 7 cm
- 4. Innergetic® Latex 3 cm
- 5. Jensen Support Pocket 12,5 cm
- 6. Jensen Cellex XS 1,5 cm
- 7. Jensen Exact Comfort Adjustment

### TENSIONS

Choose between soft, medium, firm and extra firm sleep comfort.

### COMFORT LEVEL



CONTINENTAL





# ENVIRONMENTALLY FRIENDLY

THE HIGHEST QUALITY, WITH SAFE GUARANTEES



## THE SWAN

Most of Jensen's products carry the Swan label, out of consideration for both you and the environment. Any product labelled with the Swan also has to satisfy strict requirements regarding the product's environmental impact throughout its lifespan – from raw materials to disposal or recycling.

## DOCUMENTED QUALITY

Møbelfakta is a voluntary and neutral service for testing and labelling furniture and interior products, documenting the products' quality. All the tests for Møbelfakta are based on Norwegian and international standards (EN and ISO), and are executed by accredited laboratories. Møbelfakta set requirements for, among others, strength and durability, quality of materials, stability, flammability, surface treatments and safety. All Jensen mattresses have been tested and approved by Møbelfakta.

## FOREST STEWARDSHIP COUNCIL®

All our wooden frames are FSC® approved. FSC® assures all wood is sourced and processed in a responsible and socially beneficial manner.

## RELIABLE GUARANTEES





All Jensen beds come with a five-year full guarantee and a 25-year guarantee against frame and spring breakages. You can read the full terms of the guarantee in the leaflet that comes with the mattress.

## TESTED AND APPROVED

Jensen beds are tested and approved by AEH, a neutral test institute in Zurich, Switzerland. Every bed is certified and undergoes thorough testing in connection with ergonomic, hygiene, bed climate and durability.



Designed for Sleep Comfort

 [fb.com/jensenbeds](https://fb.com/jensenbeds)  
 [pinterest.com/jensenbeds](https://pinterest.com/jensenbeds)  
 [@jensenbeds\\_official](https://instagram.com/jensenbeds_official)  
 [linkedin.com/company/jensen-beds](https://linkedin.com/company/jensen-beds)

A part of the HILDING ANDERS family

[www.jensen-beds.com](https://www.jensen-beds.com)

**HILDING ANDERS NORWAY AS**

Box 19, N-3061 Svelvik, Norge

Tel: +47 33 78 49 50 Fax: +47 33 78 49 69

E-mail: [info.no@hildinganders.com](mailto:info.no@hildinganders.com)